

KRISBOW®

SECURITY EQUIPMENT



SCAN
FOR OUR LATEST VIDEO



SCAN
FOR BROCHURE & CATALOG



SCAN
FOR OUR STORE LOCATION

PADLOCK



10097079 10097080 10097081



10097082 10097083 10097084



10097085 10097086

Features:

- Durable cost zine-alloyed
- Ergonomics designed
- Ideal for air travel



10222537 10222538



10097090

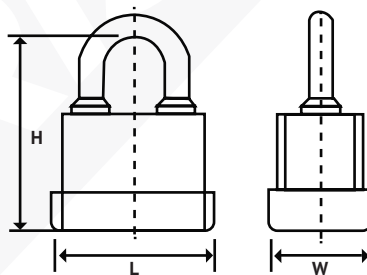


Articel No.	Model No.	Description
10097079	TRP1BK	Padlock with Key Plastic Black
10097080	TRP1O	Padlock with Key Plastic Orange
10097081	TRP1G	Padlock with Key Plastic Green
10097082	TRP3BK	Padlock 3Dial Combination Black
10097083	TRP3O	Padlock 3Dial Combination Orange
10097084	TRP3G	Padlock 3Dial Combination Green

Articel No.	Model No.	Description
10097085	TRP4BK	Padlock 4Dial Zine Alloy Black
10097086	TRP4O	Padlock 4Dial Zine Alloy Orange
10222537	TRP5BK	Padlock TSA 3 Dial Zinc Alloy Black
10222538	TRP5O	Padlock TSA 3 Dial Zinc Alloy Orange
10097090	TRP6BK	Luggage Strap Lock Black



10439372-10439374 10439375-10439377



Features:

- Hardened steel
- Maximum security protects



10439378-10439380 10439381-10439383

Articel No.	Model No.	Description	Lock Detail Size (mm)		
			L	W	H
10439372	TRSP30S	Padlock Laminated Short	39	24,5	49,5
10439373	TRSP40S	Padlock Laminated Short	49	31	59,5
10439374	TRSP50S	Padlock Laminated Short	59	35	69
10439375	TRSP30L	Padlock Laminated Long	39	24,5	67
10439376	TRSP40L	Padlock Laminated Long	49	31	86
10439377	TRSP50L	Padlock Laminated Long	59	35	101
10439378	TRWP30S	Padlock Waterproof Short	31	17,5	43,9
10439379	TRWP40S	Padlock Waterproof Short	40	22,5	57,5
10439380	TRWP50S	Padlock Waterproof Short	50	26	65
10439381	TRWP30L	Padlock Waterproof Long	31	17,5	65,9
10439382	TRWP40L	Padlock Waterproof Long	40	22,5	86
10439383	TRWP50L	Padlock Waterproof Long	50	26	98,5

KEY CABINET & CASH BOX



KEY CABINET

Features:

- Made from steel with powder coating finish
- Easy manage with colourful tag



Article No.	Model No.	Description	Dimension (W x D x H)(mm)	Weight (kg)
KW2000045	TRKC20	Key Cabinet 20 keys	160 x 80 x 200	1
KW2000046	TRKC48	Key Cabinet 48 keys	160 x 80 x 200	1.52
KW2001092	TRKC100	Key Cabinet 100 Keys	380 x 80 x 550	5.41
KW2001093	TRKC200	Key Cabinet 200 keys	380 x 140 x 550	9.61

CASH BOX

Features:

- Made from steel
- Double Layer
- Clear coating



Article No.	Model No.	Description	Dimension (WxDxH) (mm)	Weight (kg)
KW2000048	TRCB200	Cash Box Blue	200 x 160 x 90	1
KW2000049	TRCB250	Cash Box Red	250 x 180 x 90	1.4
KW2000050	TRCB300	Cash Box Green	300 x 240 x 90	2



FIRE SAFE



FIRE SAFE



10624119

- Features:**
- Fire proof up to 30 minutes
 - Waterproof for 72 hours
 - Designed for Emergencies



FIRE RESISTANT



WATER PROOF



10624319

Article No.	10624119	10624319
Model No.	TRFC1	TRFC2
Description	Fire Chest 6.5 L	Fire Chest 11 L
Specification		
Material	Plastic & concrete	
Capacity (L)	6.5	11
External Dimension (cm)	15.5 x 36.5 x 28.5	17 x 39 x 36.5
Internal Dimension (cm)	9.5 x 30.5 x 22.5	11 x 33 x 30.5
Nett Weight (kg)	8	12



FIRE RESISTANT WATER PROOF



10556221

10556222

10556223

10556224

10556225

10602134

Features:

- Fire proof up to 2 hours
- Waterproof for 24 hours
- 3 unlocking methods (fingerprint, pin, key)



Article No.	Model No.	Description	External Dimension (HxWxD) (mm)	Internal Dimension (HxWxD) (mm)	Weight (kg)
10556221	TRFS-350	Fire Safe Box	250 x 360 x 215	390 x 495 x 350	46
10556222	TRFS-530	Fire Safe Box	310 x 320 x 390	470 x 460 x 530	74
10556223	TRFS-600	Fire Safe Box	310 x 340 x 460	470 x 480 x 600	92
10556224	TRFS-700	Fire Safe Box	560 x 360 x 330	700 x 500 x 490	108
10556225	TRFS-920	Fire Safe Box	411x 455 x 780	570 x 600 x 920	176
10602134	TRFS-1300	Fire Safe Box	1260 x 555 x 580	1300 x 700 x 640	204

FIRE RESISTANT FILLING CABINET



FIRE RESISTANT

Features:

- Tahan api hingga 2 jam (suhu 927°C)
- 3 palang pengunci utama
- Engsel anti bobol / maling
- Laci dengan kunci
- Rak yang dapat disesuaikan
- Terdapat roda untuk mempermudah mobilitas, yang dapat dilepas
- Berbagai pilihan ukuran

Article No.	10131045	10131046	10131047	10131058	10131059
Model No.	TRFS100	TRFS150	TRFS200	TRFS400	TRFS700
Description	Fire Resistance Safes Large Sized ES-100	Fire Resistance Safes Large Sized ES-150	Fire Resistance Safes Large Sized ES-200	Fire Resistance Safes Large Sized ES-400	Fire Resistance Safes Large Sized ES-700
Specification					
Outside Dimension (HxWxD) (mm)	1066 x 585 x 630	1245 x 642 x 630	1356 x 737 x 630	1671 x 832 x 630	1769 x 1206 x 654
Weight (kg)	200	285	340	410	670
Locking	Digital + Key				



FIRE RESISTANT

Features:

- 1.5 hours fire protection certified by SP NT – Fire 017 90P (furnace temperature: 1010C)
- Adjustable hanger bar for different size of file
- Selective locking system, to lock drawers individually or collectively
- Master drawer Cam on the top drawer controls the lower drawers
- Each drawer is capable of carrying up to 100kgs of files
- Each drawer have individual protection, even when other drawer is open

Article No.	10131042	10131043	10131044
Model No.	TRFC2	TRFC3	TRFC4
Description	Fire resistant filling cabinet 2 drawer	Fire resistant filling cabinet 3 drawer	Fire resistant filling cabinet 4 drawer
Specification			
Outside Dimension (HxWxD) (mm)	852 x 528 x 678	1216 x 528 x 678	1580 x 528 x 678
Inside Dimension (HxWxD) (mm)	316 x 430 x 542	316 x 430 x 542	316 x 430 x 542
Weight (kg)	155	215	275
Locking	Digital + Key		



GUN SAFE



10171228



10171229



10171230



Features:

- 16 gauge steel construction
- Silent mode
- Electronic lock with key overdrive, spring loaded door

Features:

- Three-way locking bolts
- Heavy duty steel construction
- Digital Lock

Article No.	10171228	10171229	10171230
Model No.	TRGSI	TRGS5	TRGS10
Description	Gun Safe	Gun Safe	Gun Safe
Specification			
Capacity	1 pistol	5 Rifles or Shot Guns	10 Rifles or Shot Guns
Lock Type	Digital Lock		
Keypad Entry	4 digit PIN code	3-8 digits from 0-9 for secure PIN code	
Material	Seamlessly Welded Steel	Heavy duty steel	
Door Thickness (mm)	3		
Body Thickness (mm)	1.5	2	
Power Source	4 x 1.5V AA batteries		
Internal Dimension (HxWxD) (cm)	9.8 x 36.5 x 27	144.6 x 34.5 x 28	144.6 x 39.5 x 34.5
External Dimension (HxWxD) (cm)	10 x 37 x 27.5	145 x 35 x 34	145 x 48.8 x 34.5
Packing Dimension (HxWxD) (cm)	11 x 39.7 x 29	147 x 36.5 x 39.5	147 x 51.8 x 48
Nett/ Gross Weight (kg)	5.3 / 5.7	48.5 / 50	63 / 65



GUN SAFE

FIRE RESISTANCE GUN SAFE



10171231



10171232



10171233










FIRE RESISTANT



Features:

- Fire resistant for 20-60 minutes up to 760 ° C
- Combination and Digital Lock
- Sound Alarm

Article No.	10171231	10171232	10171233
Model No. Code	TRGS10FS	TRGS24FS	TRGS60FS
Description	Fire Resistance Gun Safe	Fire Resistance Gun Safe	Fire Resistance Gun Safe
Specification			
Rifle Capacity	Up to 10	Up to 24	Up to 60
Shelvesv	U type shelf	Big Shelf (1) Gun Rack (1) Clip Shelf (1) Small Shelves (3)	
			
Door Organizer	No	Yes	
			
Locks	Combination Locks	Digital Locks	
			
Handle	L type	3 spoke handle	
Locking Bolts	Side Fix Bolt (1); Active Bolts (3); Diameter = 1 inch	Side Fix Bolt (4); Active Bolts (4); Diameter = 1 inch	Side Fix Bolt (4); Up/Down Fix Bolts (1/1); Active Bolts (4); Diameter = 1 inch
Fire Rating	20 minutes	40 minutes	60 minutes
Dimensions Safe (HxWxD) (cm)	140 x 45 x 38	150 x 66 x 51	183 x 102 x 63.5
Dimensions Pack (HxWxD) (cm)	152 x 49 x 46	162 x 69 x 58.5	195.5 x 105 x 71
Weight (Nett/Gross) (kg)	92/ 97.1	151/ 157.1	393/ 400.1

CONVEX MIRROR & UNDER VEHICLE INSPECTION MIRROR



CONVEX MIRROR



10092179



KW1000474

Feature:

- Material : Polycarbonate (mirror), ABS (body)
- Multifunction bracket for wall and pipe
- With rainshield accessories
- Could be attached on wall or connect to pipe (dia.73mm/KW1000474/10092178), (dia.50mm/KW1000473/10092179)



Application:

- Boulevard, main street (u-turn, crossside)
- Store
- Warehouse, mall, hotel, bank, stadium, and airport parking area
- Road (u-turn, crossside)
- Factory aisle
- Building parking area (small to medium area)

Article No.	Model No.	Description
10092179	TRSM45	Convex Mirror Diameter 450mm Without Hood
KW1000473	TRSM60	Convex Mirror Diameter 600mm with Rainshield
KW1000474	TRSM80	Convex Mirror Diameter 800mm with Rainshield
10092178	TRSM100	Convex Mirror Diameter 1000mm with Rainshield

UNDER VEHICLE INSPECTION MIRROR



Feature:

- Available with tripod ball bearing caster wheels, allowing full range of motion with effortless maneuvering
- Has a heavy duty extruded rubber rim for comfort use
- Equipped with adjustable wheel swivel for in nite adjustment
- Light weight with a 51inch (130cm) handle
- Low 3.5inch (10.6cm) ground clearance
- Available with flashlight, batteries, and mounting bracket
- Can be used both indoor and outdoor

Article No.	KW1600015
Model No.	TRSM30UV
Description	Under Vehicle Inspection Mirror
Specification	
Weight (kg)	2.57
Ø Mirror (cm)	30
Handle (cm)	130 (Adjustable)

METAL DETECTOR



HAND-HELD METAL DETECTOR



Feature:

- Humanized design, beautiful and natural, with super high sensitivity
- Strong and durable, free from damage falling from one meter high
- Light weight, large area of detection and fast detection speed
- Two alarm modes available: buzzer sound and light alarm or vibration alarm
- Low voltage indicator

Article No.	10154915
Model No.	TRMD100
Description	Hand Held Metal Detector
Specification	
Alarm Type	Buzzer sound, LED lighting alarm and vibration alarm
Standard Sensitivity Level (mm)	Pin: 30-60, Coin: 75-100, 20cm Dagger:160-180, 64 types pistol:180-195
Adjustable Sensitivity	Yes, with knob adjuster
Operating Current (mA)	<50
Operating Frequency (Khz)	25
Operating Environment	-5 to 55° C, <85%RH
Power Supply	DC9V (6F22) battery, standard (alkaline type) or rechargeable
Unit Dimension (L xW xH) (mm)	410 x 80 x 42
Packing Dimension (L xW xH) (mm)	510 x 95 x 50
Net/Gross Weight (g)	400 / 700

METAL DETECTOR WALK THROUGH



Article No.	10154914
Model No.	TRMD200
Description	Metal Detector Walk Through 18 Zones
Specification	
Screen (inch/LCD)	5.5
Detection Zone	18 localization zones, Min. Height of Detection: 20mm
Alarm	- Sound and light, four LED light bars on back and front of the door frame - Multi zones alarm when detected - 9 sounds and 8 volume levels for selection
Sensitivity	Adjustable from 0 to 1999, can detect a clip or 1/2 cutter blade
Adjustable Signal Frequency (Hz)	7000 - 8999
Minimum Distance	0.5m between two WTMD at high sensitivity
Gate Material	PVC surface board
Serial Port Communication	RS 232 to connect to computer
Weather Proof	IP55, supporting outdoor work, avoid false alarm in wind or shock
Power Supply	100 to 240VAC, 50/60Hz, Max. Power Consumption: 12 Watt
Operation Environment	-20 to 45 °C / 0 to 98 %RH
Outer Frame (HxWxD) (mm)	2210 x 845 X 710
Inner Frame (HxWxD) (mm)	1980 X 710 X 608
Weight (Unit/Gross) (kg)	63/ 67 Kg
Packing size (cm/kg)	#1: 231 x 77 x 24, / 51 and #2: 77 x 54 x 26, / 16

Feature:

- Outdoor and indoor application
- IP55 Weather resistant protection
- Operates with a remote controller for all functions
- Password and hardware key access protection
- Low intensity magnetic field emission technology (safety / harmless)compliant with international safety standard
- Detect threat objects including magnetic, non-magnetic metals and mixed alloys with high sensitivity to find tiny threat
- Intelligent traffic and alarm counters that calculate traffic flow and alarm result.
- Digital signal processing and filtering system with excellent ability to resist electromagnetic interference



X-RAY



X-RAY BAGGAGE SINGLE VIEW



10240584



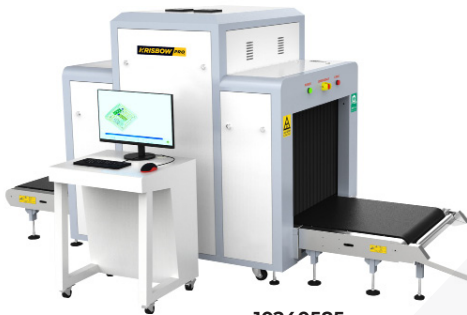
GENERATOR WARRANTY

Feature:

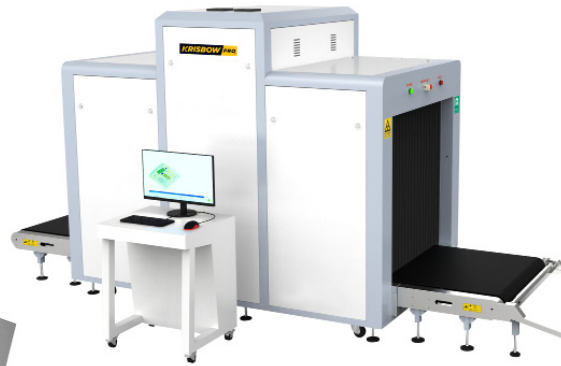
- Multilingual operation
- Automatic built in test and self diagnosis
- Secure access Key
- Threat alert and material classification
- Auto archiving
- Energy saving design
- One key turn off
- Drugs and explosives ' inspection
- Indication of the date and time
- Baggage counter
- Sens-Tech detection board



10229349



10240585



10240586

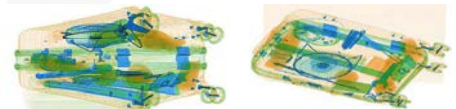


Keyboard console for TH series



Article No.	10240584	10229349	10240585	10240586
Model No.	TH5030	TH6550	TH8065	TH100100
Description	X-Ray Baggage Scanner Type TH 50 x 30	X-Ray Baggage Scanner Type TH 65 x 50	X-Ray Baggage Scanner Type TH 80 x 65	X-Ray Baggage Scanner Type TH 100 x 100
Specification				
Tunnel Size (mm)	500(L) x 300(W)	659(L) x 504(W)	800(L) x 650(W)	1000(L) x 1000(W)
X-Ray Generator	140 KV, upward ray direction		140 KV, downward ray direction	
X-Ray Detector	L-Shaped Photo-diode Array			
Steel Penetration	32mm steel	30mm steel		
Wire Resolution	AWG40		AWG36	AWG34
X-Ray Dosage	≤3.5μGy per inspection	≤2.5μGy per inspection		
X-Ray Leakage	<1μGy/h at any point 5cm outside the external surface			
Film Safety	Guarantee ASA / ISO 1600 film			
Conveyor Speed	0.22m/s			
Conveyor Height	668.5mm from the floor	700mm from the floor	341mm from the floor	
Conveyor Max. Load (kg)	100	150	200	
Unit Size (H x W x L) (mm)	1165 x 746 x 1660	1363 x 902 x 2195	1536 x 1095 x 2848	1916 x 1295 x 3629
Unit Weight (kg)	290	450	630	940
Monitor / OS	17-inch LCD, 1280*1024 pixel / Linux	17-inch LCD, 1280*1024, console desk / Linux	Two 17-inch LCD, 1280*1024, console desk / Linux	
Power Consumption	Max. 500W	Max. 800W	Max. 1KW	
Certificate of Conformity	ISO19001, ISO14001, OHSAS18001, CE, RoHS, FDA, FCC			

X-RAY BAGGAGE DUAL VIEW



Feature:

- Dual view technology with images from two angles
- Radiation safe
- High resolution, high penetration and good image quality
- Multilingual operation
- Automatic built in test and self diagnosis
- High load-bearing capacity
- Threat alert and material classification
- Energy saving design
- One key turn off with patent
- Drugs and explosives detection
- Sens-Tech detection board and Hamamatsu detector



Article No.	10160337	10240583	10165401
Model No.	AT6550D	AT8065D	AT100100D
Description	X-Ray Baggage Scanner Type AT 65 x 50	X-Ray Baggage Scanner Type AT 80 x 65	X-Ray Baggage Scanner Type AT 100 x 100
Specification			
Tunnel Size (mm)	660(W) x 501(H)	813(W) x 650(H)	1007(W) x 1008(H)
X-Ray Generator (Two)	160 KV, vertical and horizontal ray direction		
X-Ray Detector	Two Hamamatsu L-Shaped Photo-diode Array		
Steel Penetration	34mm steel	32mm steel	
Wire Resolution	Horizontal AWG38 / Vertical AWG36	Horizontal AWG40 / Vertical AWG36	
X-Ray Dosage	≤4.8μGy per inspection		
X-Ray Leakage	<0.5μGy/h at any point 5cm outside the external surface		
Film Safety	Guarantee ASA / ISO 1600 film		
Conveyor Speed	0.22m/s		
Conveyor Height	669mm from the floor	306mm from the floor	309mm from the floor
Conveyor Max. Load (kg)	150	200	
Unit Size (H x W x L)(mm)	1331 x 1348 x 2456	1491 x 1481 x 3060	1878 x 1781 x 3909
Unit Weight (kg)	900	950	1350 Kg
Monitor / OS	Two 17-inch LCD, 1280*1024, console desk / Windows		
Power Consumption	Max. 1KW	Max. 1.5KW	
Certificate of Conformity	ISO19001, ISO14001, OHSAS18001, CE, RoHS, FDA, FCC		



KRISBOW®

Distributed by: